

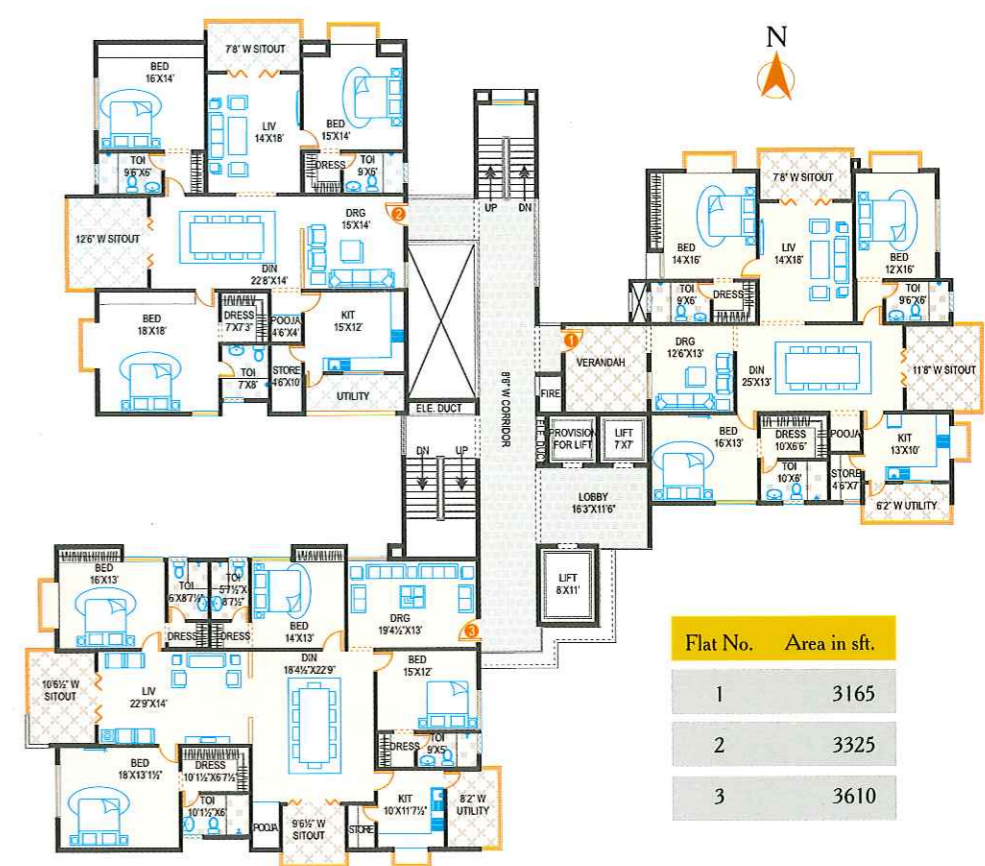
Towers of envy



### Layout Plan



### Typical Floor Plan | Block-A



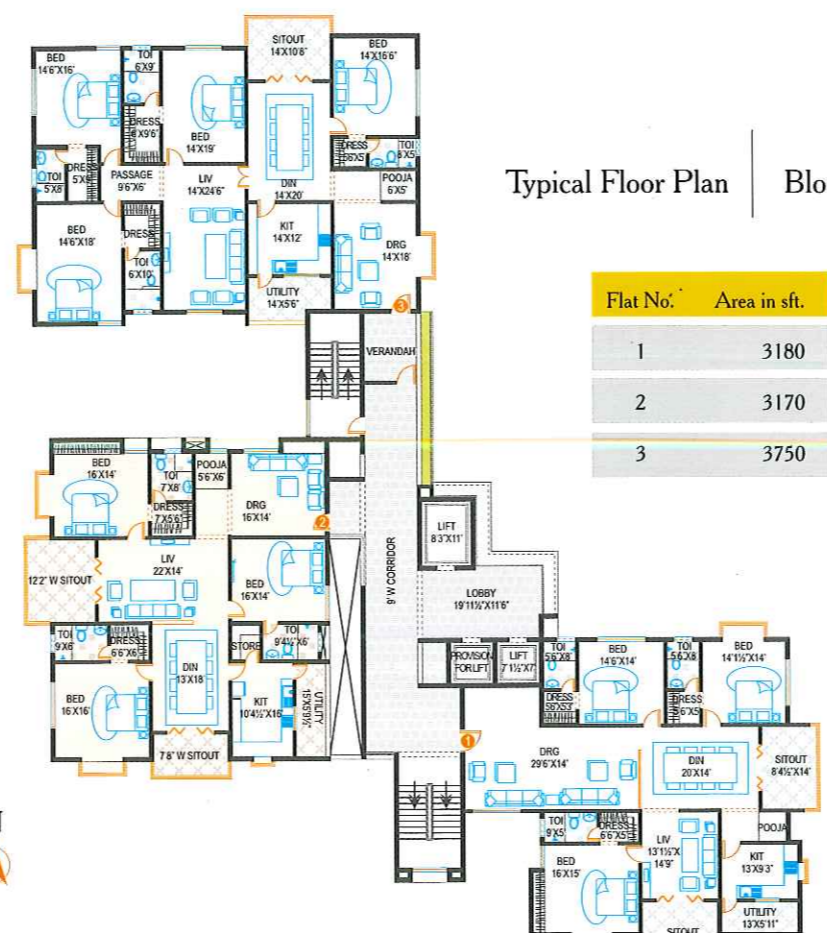
Flat No.	Area in sft.
1	3165
2	3325
3	3610

### Typical Floor Plan | Block-C



Flat No.	Area in sft.
1	6500

### Typical Floor Plan | Block-B



Flat No.	Area in sft.
1	3180
2	3170
3	3750



Residences so exclusive, you'll be the envy of all Hyderabad.

This is it. The ultra-luxury home you've been waiting for. So exclusive, only one in a million people can afford to buy it. Happily, that one is you!

When you have seen it all, done it all, got it all and lived life on your terms, what is the best testimony to your achievements and the heights you have reached?

- Special features**
- Only 17 apartments
  - Each apartment spread across 6500 sft
  - Fully furnished
  - Elegant reception area on ground floor with:
    - Mini Digital Theatre
    - Guest Lounge
    - Drivers Lounge
    - Kids Play Pen
    - Gymnasium



## Amenities

### Club House

- Swimming Pool

### Common Amenities

- Air-conditioned well equipped Gym
- Banquet Hall for 100 people with Kitchen & Pantry
- Beautiful Landscaped Gardens

### Backup Generator

- Stand by soundproof Generator of 62KVA capacity for clubhouse for fans, lights, water pumps and common areas.

### Security

- Every flat will be connected to the security office through an intercom.
- All residents will have Access Cards.



### Location Highlights

- 2km. from Cyber Towers / Wipro
- 3km. from Microsoft / Infosys
- 1km. from Botanical Gardens
- 2km. from Shilparamam
- 3km. from Golf Course
- 3km. from ISB
- 4km. from Oakridge / DPS
- 2km. from Expressway

Promoters

**Meenakshi**  
Infrastructures Pvt. Ltd.,

Meenakshi House, 8-2-418, Road # 7,  
Banjara Hills, Hyderabad - 500 034  
Tel: +91-40-23358111 / 222 / 333,  
Fax: +91-40-23351133  
www.meenakshigroup.com

Architects



**Vistas Architectural Consultants**

MUMBAI . PUNE . HYDERABAD . VISAKHAPATNAM

www.FRMV.org (+91-9246542471)