

"... Tall and green, and nameless, bamboo walked down centuries and crossed continents in time to stand there, waiting, naked of language, when the first people came, to make their first village."

... Anonymous

The gentle sound of breeze in the bamboo trees

You are at the threshold of an exclusive gated community of 102 villas, which has been created to meet your fancy dreams of an ideal home. You will be pleasantly surprised to discover that every thought and concept you had in mind has been given concrete shape. And, as a distinctive backdrop, we have set the villas amidst thick bamboo groves designed by reputed landscape architects.

A serene tranquility permeates all over like the music produced by the breeze in the bamboos. Amidst salubrious surroundings find dwellings that have qualities intended to delight every member of your family. The panorama is breathtaking and you are in for a series of surprises as you discover the effort and concern that have gone into creating those subtle and fine details to present you, life in its full splendor.

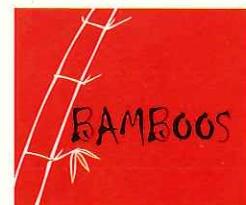
Layout Plan

TYPE	FACING	PLOT NO.S
Type - A	East	33to 48 & 62 to 74, 83 to 91
Type - B	West	49 to 61 & 75 to 82, 92 to 103
Type - C	North	2 to 8 & 17 to 24 29 to 32
Type - D	South	9 to 16 & 25 to 28

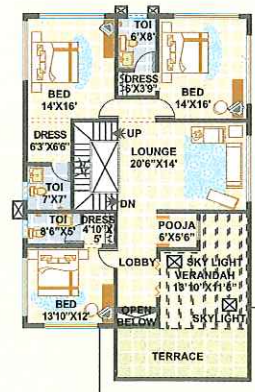


Amenities above your imagination

- Classy clubhouse
- Banquet hall with kitchen and pantry
- Swimming pool
- Air- conditioned gym
- Air-conditioned Yoga and Meditation center
- Jogging track
- Billiards
- Toddlers pool
- Children's play area



First Floor Plan



Second Floor Plan



Ground Floor Plan



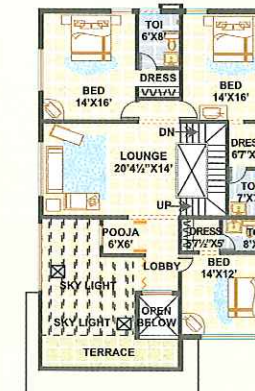
East Facing Unit



Area Statement

Ground Floor	1966.00 Sft.
First Floor	1799.00 Sft.
Second Floor	690.00 Sft.
Total Built-up	4455.00 Sft.

First Floor Plan



Second Floor Plan



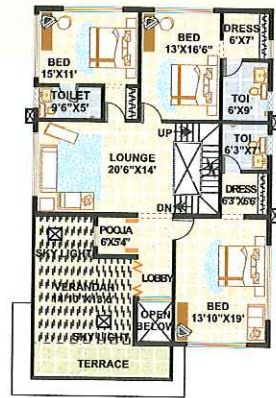
North Facing Unit



Area Statement

Ground Floor	1966.00 Sft.
First Floor	1799.00 Sft.
Second Floor	660.00 Sft.
Total Built-up	4425.00 Sft.

First Floor Plan



Second Floor Plan



Ground Floor Plan



West Facing Unit



Area Statement

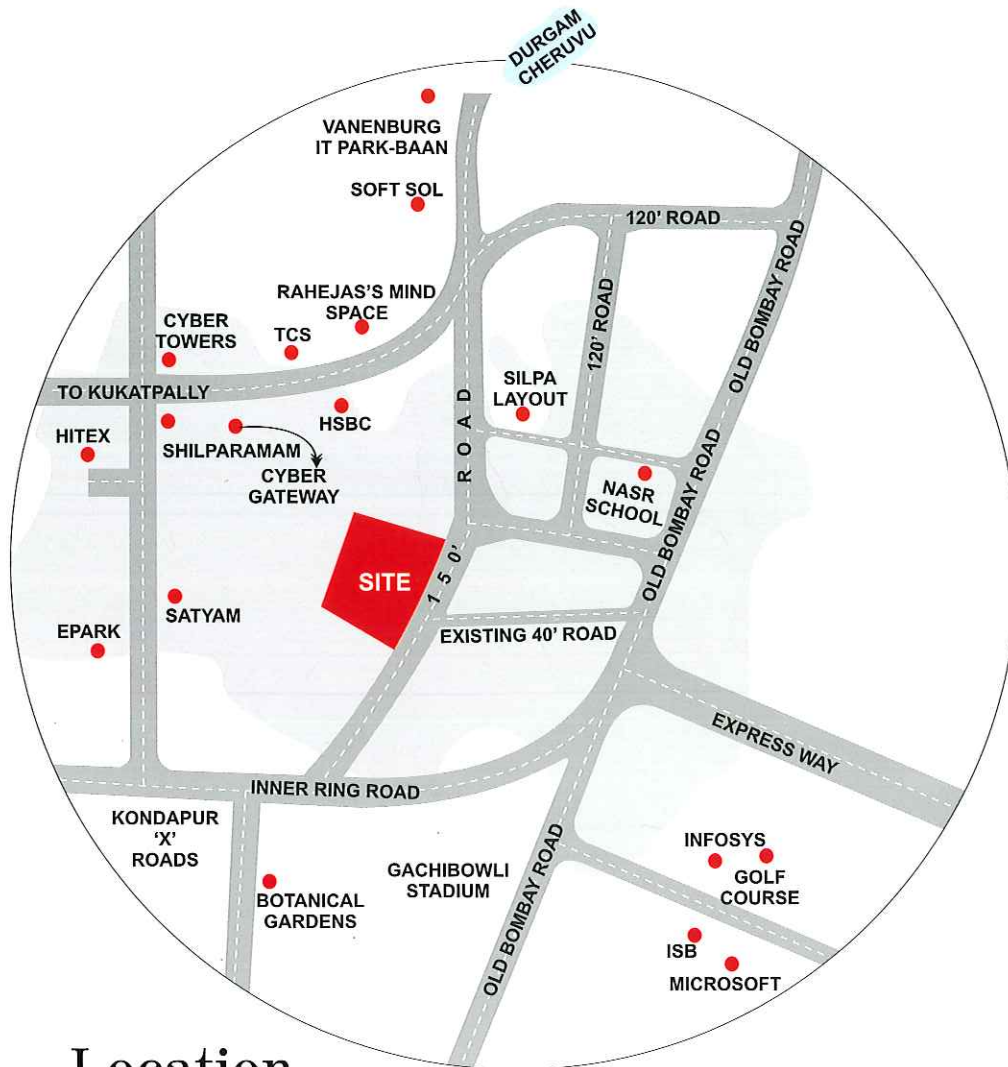
Ground Floor	1966.00 Sft.
First Floor	1799.00 Sft.
Second Floor	770.00 Sft.
Total Built-up	4535.00 Sft.



- Other plantations on the avenues
- Landscaping
- Flower gardens
- Velvety lawns
- Water fountains
- Beautification

Exclusive Features:

- Timeless Beauty : Italian Marble Flooring To Grace Your Feet
- Constant Climate Control : Through Central Air Conditioning With VRV System
- Greater Security : Access Controlled Entry Gate
- Every House Connected To Security Office Through Intercom Video Phone
- Solar Heating System & Solar Avenue Lighting For Greater Economy
- A Gated Community Layout With Solar Fencing & No Individual Compound Walls



Location Highlights

- 2km. From Cyber Towers / Wipro
- 3km. from Microsoft / Infosys
- 1km. from Botanical Gardens
- 2km. from Shilparamam
- 3km. from Golf Course
- 3km. from ISB
- 4km. from Oakridge / DPS
- 2km. from Expressway

www.FHMY.org (+91-9246542471)

Meenakshi
Infrastructures Pvt. Ltd

Meenakshi House, 8-2-418,
Road #7, Banjara Hills,
Hyderabad - 500 034
Tel: +91-40-23358111 / 222 / 333,
Fax: +91-40-23351133
E-mail: info@meenakshigroup.net

www.meenakshigroup.net

Architects

VISTAAS

HYDERABAD : # 115,116, Model House,
Punjabgutta, Hyderabad - 500082
Ph: 040-2335 0278, 2335 0279

PUNE : 114, commercial wing,
Parmer Park, Wanowrie, Pune - 40.
Ph: 020-6561 2505, 4009 1619.